

# Kingston Toolbox 2.0 Firmware Update Procedure

---

## Intended for:

SHFS37A/120G  
SHFS37A/240G

## Firmware Rev. 580ABBF0 (07/02/14)

- Improved drive stability
- Enhanced overall system compatibility

## Previous Firmware Revisions

|                                      |   |
|--------------------------------------|---|
| <b>541ABBF0</b><br>(No Release Date) | <ul style="list-style-type: none"><li>• Original firmware at launch</li></ul> |
|--------------------------------------|---|

- 

## System Requirements

### Platform

- PC with SATA II or SATA III interface
- Kingston SandForce-based SSD

### OS Support

- Windows® 8, 8.1
- Windows® 7 (SP1)
- Windows Vista® (SP2)
- Windows XP® (SP3)

## System Preparation

- As a precaution, perform a backup of all your data to ensure no data is lost during the firmware update process
- You must be running Windows 8.1, 8, 7 SP1, Vista SP2, or XP SP3 in AHCI mode for this to function properly
- Do not unplug power at any time during the firmware update
- **Intel and AMD** users must use the Microsoft AHCI driver for the update procedure to complete successfully
- Use only native SATA ports to perform upgrade. Do NOT use third party controllers
- Notebook users, please use AC power to prevent any power loss during firmware upgrade

# Kingston Toolbox 2.0 Firmware Update Procedure

---

## Getting Started

These instructions are designed to walk you through the firmware update procedure. Please perform a backup of your data before proceeding.

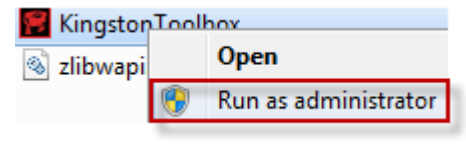
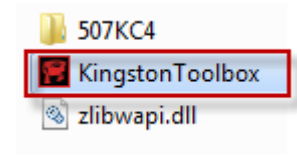
### Step 1: Launching the Utility

First, locate your download.

Double-click the zip file and extract it to your preferred location. You will see the update utility, the instructions in .pdf form, a .dll file and firmware file folders.

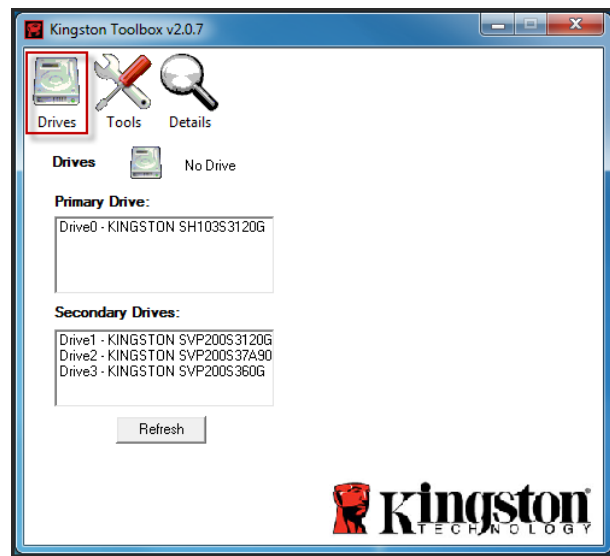
If you are using Windows® 8, 7 SP1 or Vista SP2, right-click the Kingston Toolbox and select "Run as administrator" to launch the application.

If you are using Windows® XP SP3, double-click the Kingston Toolbox and proceed.



The Kingston Toolbox application interface will appear and default to the "Drives" window.

*Note: If your drive does not appear within the window, confirm that you have adhered to the requirements located within the "System Preparation" section at the start of this document.*



# Kingston Toolbox 2.0 Firmware Update Procedure

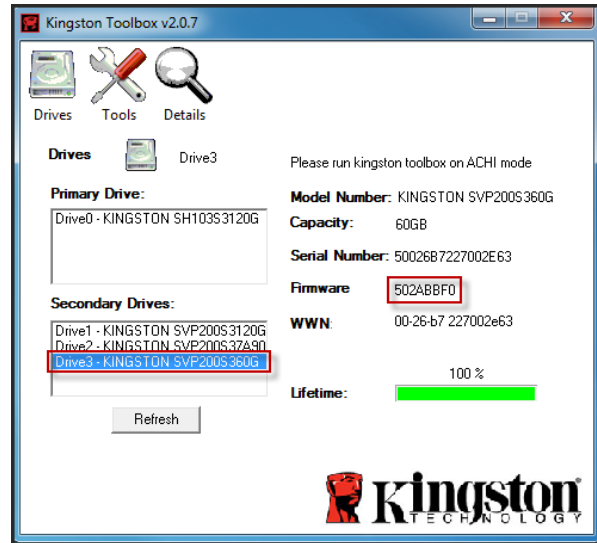
## Step 2: Identifying your model number and firmware revision

Select the drive you wish to update from "Primary Drive" or "Secondary Drive".

Once you have selected the drive you wish to update, drive information including Model Number, Capacity, Serial Number, Firmware, WWN, and Config ID will appear on the right.

Identify your firmware revision, determine that you have selected the correct drive and continue to the next step.

*Note: If you attempt to update the firmware on your PRIMARY DRIVE, the application will recommend that you reboot your system after the update is complete.*



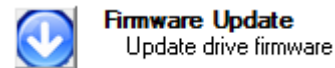
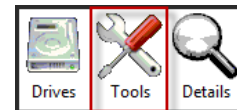
## Step 3: Selecting the "Tools" window and updating your SSD

Select the "Tools" tab located at the top of the application interface.

*Note: If you haven't backed up your data yet, Kingston recommends you do so before proceeding with the firmware update.*

Proceed to the "Firmware Update" button. If you are ready to update your drive, click the white arrow to continue. The update process should take less than a minute to complete.

Once the update is complete, you will see "Download Firmware Complete" appear in the lower left corner within the application window.



Download Firmware Complete



# Kingston Toolbox 2.0 Firmware Update Procedure

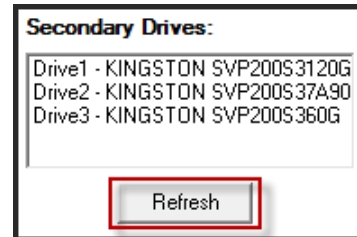
---

## Step 4: Confirming the update was successful

Navigate back to the "Drives" window within the application interface.

Click the "Refresh" button and reselect your drive to confirm that your firmware was successfully updated.

*Note: If you wish to update multiple drives, you must do so one at a time. Please proceed back to Step 1 and continue through the update procedure.*



## Step 5: Closing the update utility and restarting your system

Click the "X" in the upper right corner to close the Toolbox. After completing the firmware update process successfully, **Kingston recommends that you safely power down your system, wait 10 seconds and then power on.**

For additional support information, please contact Kingston Technical Support @ <http://www.kingston.com/support>