



## *DataTraveler<sup>®</sup> BlackBox User's Manual*

*This document is designed to help users become familiar with the DataTraveler<sup>®</sup> BlackBox (DTBB). For additional support, please visit our on-line technical support site at [www.kingston.com/support](http://www.kingston.com/support).*

- USB 2.0 High Speed compliant and 1.1 Full Speed compatible.*
- Comprised of 100% Secure Partition backed by a Complex Password.*
- Incorporates a 256-bit AES Hardware Based Encryption.*
- Compliant to the Federal Information Processing Standards (FIPS) 140-2 Level 2 certification*

## TABLE OF CONTENTS

<b>1</b>	<b>System .....</b>	<b>3</b>
1.1	Requirements .....	3
<b>2</b>	<b>Getting Started .....</b>	<b>4</b>
2.1	Driver Installation.....	4
2.2	Initial Setup .....	4
<b>3</b>	<b>Using DTBB .....</b>	<b>7</b>
3.1	Login to DTBB.....	7
3.2	Browsing the DTBB.....	7
3.3	Safely remove the DTBB.....	8
<b>4</b>	<b>Explore DTBB .....</b>	<b>8</b>
4.1	Secure Storage .....	10
<b>5</b>	<b>FAQs.....</b>	<b>11</b>

## **1 SYSTEM**

### **1.1 Requirements**

- Pentium III Processor
- 16MB free disk space
- USB 1.1/ 2.0
- Operating Systems
  - Windows 2000<sup>®</sup>, SP3 and SP4.
  - Windows XP<sup>®</sup> (Home and Professional), SP1 and SP2.
  - Windows Vista<sup>™</sup>
- Two available drive letters between physical drives and network shares.

## 2 GETTING STARTED

### 2.1 Driver Installation

1. Insert the DataTraveler® BlackBox (DTBB) into an available USB port. The AutoPlay may appear after insertion. Select Run DTBB\_Launcher.exe to continue.

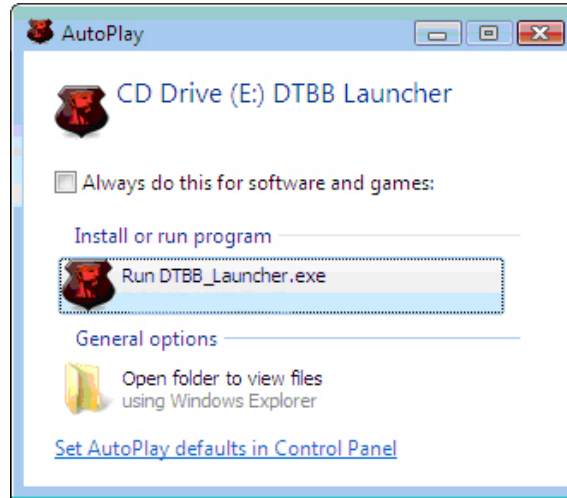


Figure 1: AutoPlay Dialog

### 2.2 Initial Setup

1. After the hardware installation is complete, the Setup Wizard will guide you through the initial configuration of DTBB. Select your language and click next to continue.

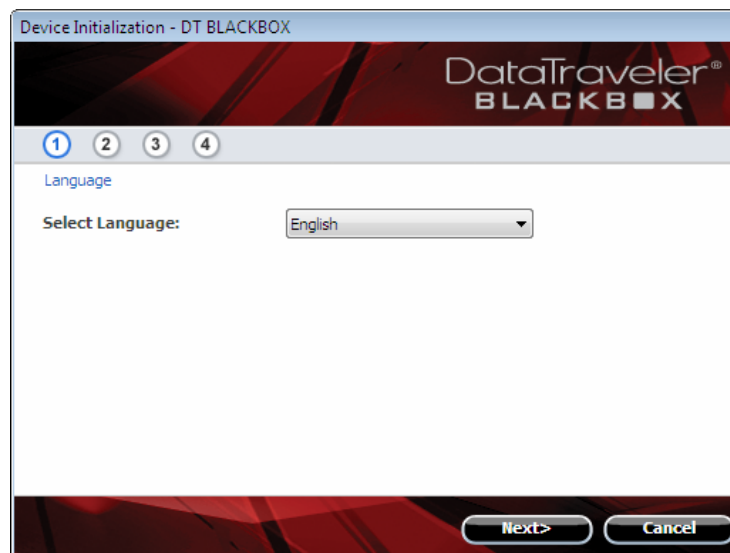


Figure 2: Setup Wizard

2. If the Setup Wizard does not appear automatically, please perform the following:
  - a. Access My Computer (Computer in Windows Vista), right-click the drive labeled **DTBB Launcher** and select **Explore**.
  - b. Double-click **DTBB\_Launcher.exe** to execute the Setup Wizard.
  
3. During your initial configuration of the DTBB, you must set a device password for data protection. This password enables the use of the device as a removable storage, and protects your DTBB application data and file information. After selecting the language and accepting the license agreement, the *Password Setup* dialog box will be displayed (Figure 3).

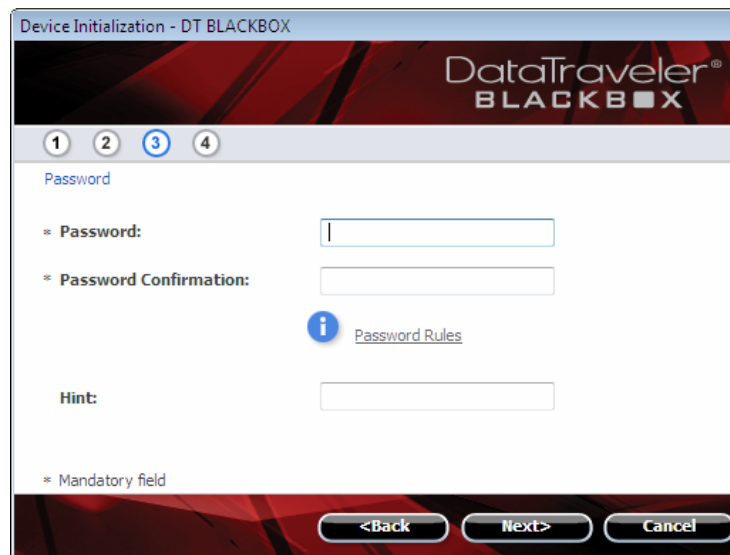
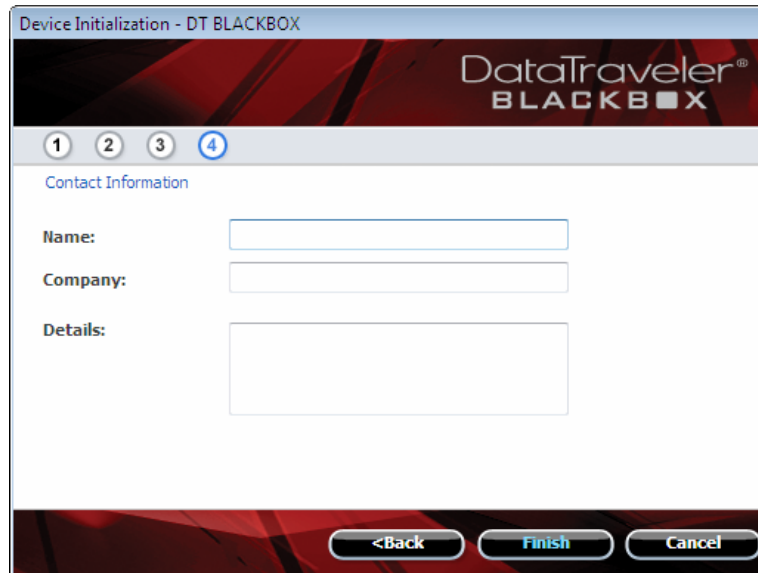


Figure 3: Complex Password

The *Password Setup* dialog box (Figure 3) requires you to enter a password and re-enter it for confirmation. The password must be a minimum of 6 characters and must not exceed 16 characters. It must also contain three different types of characters: lower case letters, upper case letters, numeric and/or special characters. A password hint is strongly recommended to remind you of your password. Click **Next** to set your DTBB password. (Example of Complex Passwords: ABC\$123 or Bob411).

4. Enter your Contact Information into the appropriate fields (Figure 4).



Device Initialization - DT BLACKBOX

DataTraveler<sup>®</sup>  
BLACKBOX

1 2 3 4

Contact Information

Name:

Company:

Details:

<Back Finish Cancel

*Figure 4: Contact Information*

5. Click Finish to complete the initial setup of DTBB.

## 3 USING DTBB

### 3.1 Login to DTBB

1. After the initial Setup is complete, you will automatically be logged into DTBB. Hereafter, you will login to DTBB after Windows recognizes the drive is inserted into the USB port. Enter your password to access the data stored on the DTBB data partition.

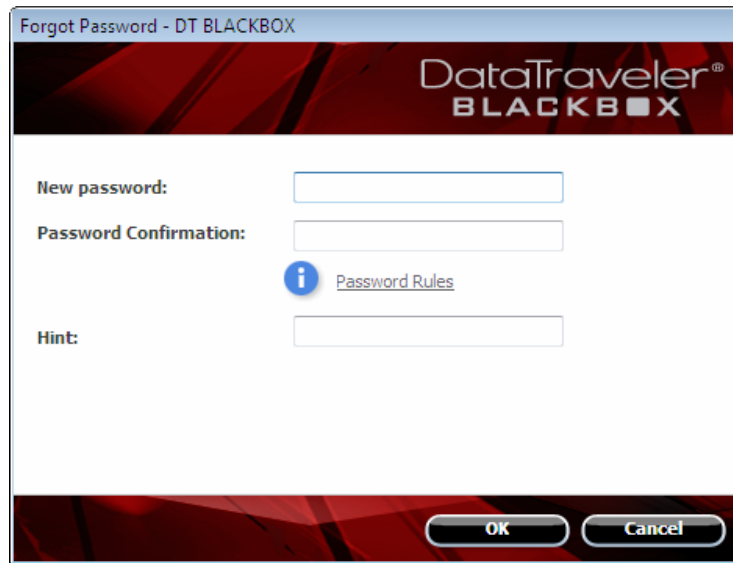


Figure 4: DTBB Login

### 3.2 Browsing the DTBB

1. The DTBB is broken down into two (2) partitions.
  - o **DTBB Launcher** is a read-only partition, which contains the DTBB system files.
  - o **Kingston** is the single read/write partition for data storage protected by a complex password.

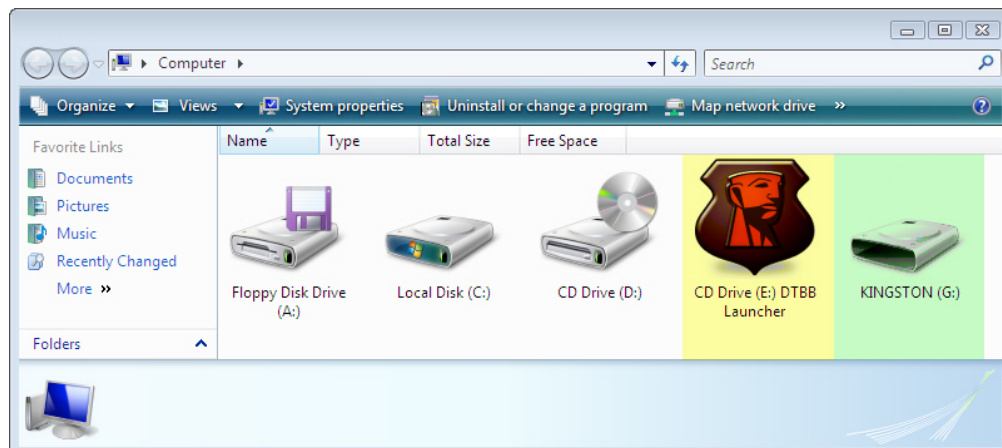


Figure 5: DTBB Partitions

### 3.3 Safely remove the DTBB

Click on the **DT BLACKBOX** icon located in the System Tray and select, **Shut down DT BLACKBOX**. Once you receive the confirmation, you can safely remove the DTBB from the USB port.

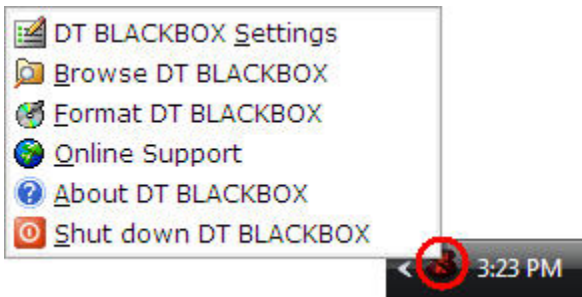


Figure 6: Shut down DT BLACKBOX

## 4 EXPLORE DTBB

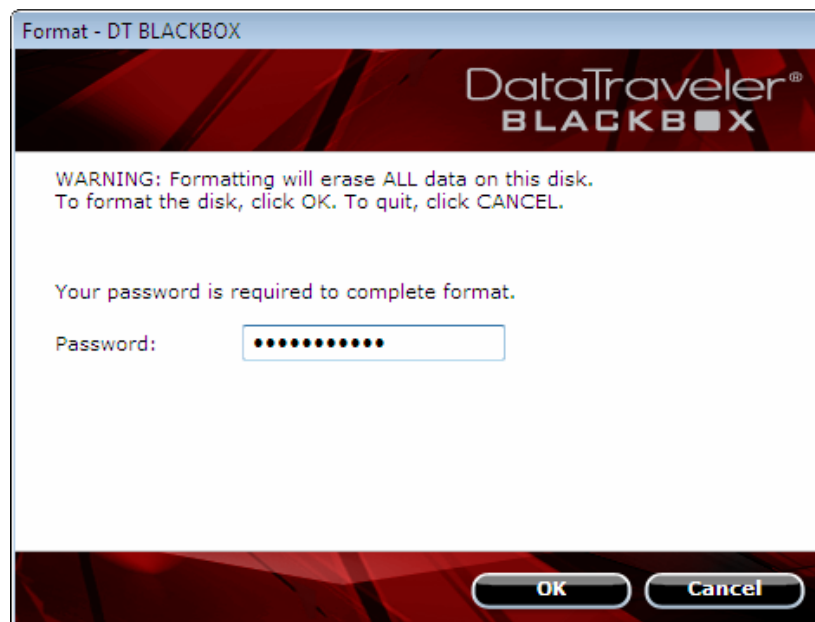
There are additional features available via the **DT BLACKBOX** icon located in the System Tray (Figure 6). These options are as follows:

- **DT BLACKBOX Settings** – This option allows you to select the Language your DTBB features will display in. You can also change the Contact Information and the Password / Password Hint.
- **Browse DT BLACKBOX** – Will auto-launch Windows Explorer enabling you to view the data in your read/write partition.



- **Format DT BLACKBOX** – This option is used to format the DTBB. **Warning**, all data on the read/ write partition will be lost! **Note: The DTBB password is required in Windows XP/2000 (non administrative users) and Windows Vista (all users), to complete the format.**

**Warning: DTSecure Privacy includes a “lockdown” for enhanced security. This lockdown will lock the DTBB whenever a maximum number of password attempts exceed a pre-configured value. (see 4.1 Secure Storage for details)**



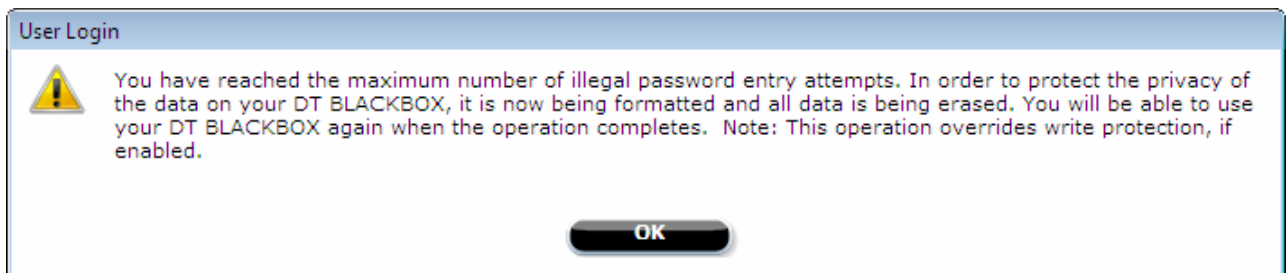
*Figure 7: Format DT BLACKBOX*

- **Online Support** – Takes you directly to Kingston’s on-line technical support. **Note: Internet service is required for this feature.**
- **About DT BLACKBOX** – Used to obtain important information such as the DTBB Version, Firmware Version, and Serial Number.
- **Shut down DT BLACKBOX** – Will stop the DTBB drive for safe removal.

## 4.1 Secure Storage

As with any USB drive, DTBB can be used to store data. However, all information on the DTBB is encrypted with a 256-bit AES Hardware Based Encryption and is also secured with password protection. In addition, the DTBB includes a “lockdown” for enhanced security. This lockdown will lock the DTBB whenever a maximum number of password attempts exceed a pre-configured value (the default value for the DTBB is 10). In such an event, you must format DTBB to regain operation (Figure 8).

**Warning, all data will be lost after formatting the drive!**



*Figure 8: DTBB Lockdown*

## 5 FAQs

FAQs are used to bring you frequently asked questions, which may surface during the use of a product. Below we have posted the most common FAQs for quick viewing. For the latest technical documentation please visit Kingston's on-line technical support at [www.kingston.com/support](http://www.kingston.com/support)

Q1) Every time I login to the DTBB drive on Windows Vista™, an AutoPlay dialog appears with an option to “Speed up my system using Windows ReadyBoost.” What is this feature?

A1) ReadyBoost™ is a Windows Vista™ feature which has the ability to utilize USB flash drive storage space to improve system performance. Currently DTBB does not support Windows ReadyBoost™.

Q2) When I insert DTBB into a Windows Vista™ computer, I can not login to the data partition and the CD partition is not visible.

A2) If the DTBB data partition (i.e. E:\) is assigned a drive letter prior to the CD partition (i.e. F:\), a drive letter conflict can occur with an existing network share. The DTBB Launcher can not be executed when the DTBB CD partition is assigned a drive letter already in use. The quickest way for administrative users to solve this problem is to manually change the drive letter of the flash drive via Disk Management. For Kingston DTBB, change the conflicting drive letter for the DTBB Launcher partition. Non-administrative users should reinsert the DTBB, which could result in Windows reassigning a different drive letter for DTBB, or permanently reassign the conflicting network share to a different drive letter.

Q3) I inserted the DTBB into a Windows XP system and it does not show up in My Computer or I receive a, “DTBB requires two free drive letters...” error message.

A3) This is a common Windows XP issue which is caused by a drive letter conflict. In configurations where the network drive letter(s) follow physical drive letters, Windows XP may assign newly inserted flash drives a drive letter which is already taken by a network share. The quickest way for administrative users to solve this problem is to manually change the drive letter of the flash drive in Disk Management, located in Control Panel -> Administrative Tools -> Computer Management. For Kingston DTBB, change the conflicting drive letter for the DTBB Launcher partition. If the launcher does not auto-run reinsert the drive or manually run the Launcher from the DTBB Launcher partition.

See Microsoft Knowledge Base article for details at:

<http://support.microsoft.com/default.aspx?scid=kb;en-us;297694>

**Note: If the launcher still does not auto-run, you may need to disable or upgrade any third party hard disk encryption software.**

Q4) I inserted my DTBB into the USB port but it did not launch.

A4) The new hardware setup in Microsoft Windows XP may not always start the auto-run code on the drive. If this happens, the DTBB Launcher partition can be seen in Windows, but the password prompt will not display and the DTS Privacy Drive partition will not be available.

This can be resolved by restarting the computer and reinserting the DTBB, or by manually launching the DTBB software. The DTBB software launcher is located on the DTBB Launcher drive as “DTBB\_Launcher.exe.”



---

**Note: Make sure the ExmpSrv.exe process is not running in the Task Manager when attempting to launch the DTBB Launcher.**

On Windows Vista, the AutoPlay process has been changed to better improve system security. Depending on how the system is setup for AutoPlay, the DTBB drive may or may not launch automatically after insertion. By default, the AutoPlay dialog will display after inserting the drive into the USB port. Execute the DTBB Launcher via AutoPlay by selecting DTBB\_Launcher.exe.

Q5) Every time I insert the DTBB, MyTraveler will auto-run displaying a message that reads, “New DataTraveler has Arrived.”

A5) Though MyTraveler is an application that Kingston distributes; it is not supported with the DataTraveler® BlackBox. This is an application that resides in Windows as TSR or Terminate-Stay Resident. This application was also installed prior to the installation of the DTBB. If MyTraveler continues to auto-run, simply cancel the MyTraveler console and continue as usual. Note: The DataTraveler® BlackBox is not designed for the MyTraveler console and such use is not supported.

Q6) After shutting down DTBB, the following error message may display, “The DT BLACKBOX application has shut down successfully, but the operating system could not eject the device.”

A6) This happens when trying to shutdown the DT BlackBox while an application or document on the drive is still open or when Windows assigns a drive letter (i.e. E:\) for the data partition prior to assigning a drive letter for the DTBB Launcher partition (i.e. F:\). To resolve, close any open document and/or application that is operating from the DT BlackBox and select “Safely Remove Hardware” from the Windows taskbar.