

# SS200S3/30G Firmware Update Procedure

---

## Intended for:

SS200S3/30G

## Release Notes for Firmware Rev. S8FM06.9 (2/25/14)

- Improved bad block management
- Resolved minor bug related to TRIM behavior
- Enhanced overall system stability

## System Requirements

### Platform

- PC with SATA II or SATA III interface
- Kingston SS200S3 SSD

### OS Support

- Windows® 8, 8.1
- Windows® 7 (SP1)
- Windows Vista® (SP2)
- Windows XP® (SP3)

## System Preparation

- As a precaution, perform a backup of all your data to ensure no data is lost during the firmware update process
- You must be running Windows 8.1, 8, 7 SP1, Vista SP2, or XP SP3 in AHCI mode for this to function properly
- Do not unplug power at any time during the firmware update
- **Intel and AMD** users must use the Microsoft AHCI driver for the update procedure to complete successfully
- Use only native SATA ports to perform upgrade. Do NOT use third party controllers
- Notebook users, please use AC power to prevent any power loss during firmware upgrade

## Getting Started

These instructions are designed to walk you through the firmware update procedure. Please perform a backup of your data before proceeding.

# SS200S3/30G Firmware Update Procedure

---

## Step 1: Launching the Utility

First, locate your download.

Double-click the zip file and extract it to your preferred location. You will see the update utility and the instructions in .pdf form.

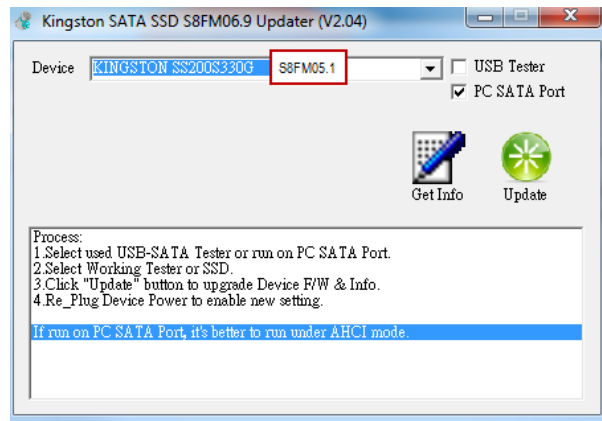
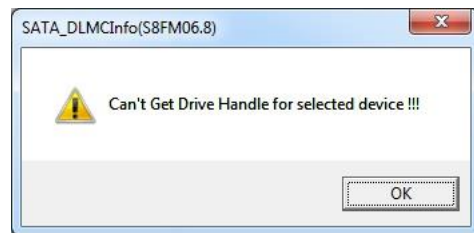
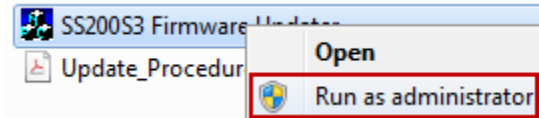
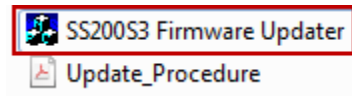
If you are using Windows® 8, 7 SP1 or Vista SP2, right-click the SS200S3 Firmware Updater and select "Run as administrator" to launch the application.

If you are using Windows® XP SP3, double-click the SS200S3 Firmware Updater and proceed.

If a popup appears, click OK to continue.

The SS200S3 Firmware Updater application interface will appear and default to the "Kingston SATA SSD" window.

*Note: If your drive does not appear within the window, confirm that you have adhered to the requirements located within the "System Preparation" section at the start of this document.*



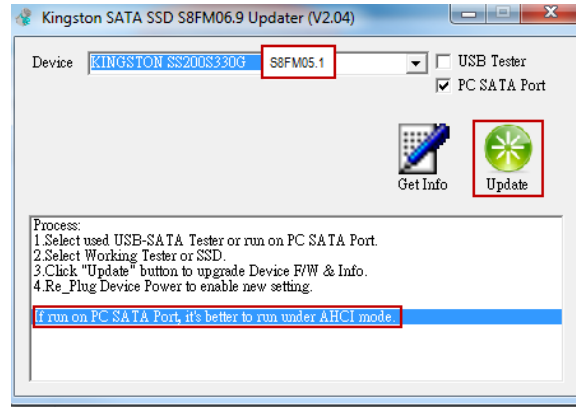
# SS200S3/30G Firmware Update Procedure

## Step 2: Identifying your model number, firmware version and updating your SSD

Select the drive you wish to update from “Device” field.

*Note: If you haven't backed up your data yet, Kingston recommends you do so before proceeding with the firmware update.*

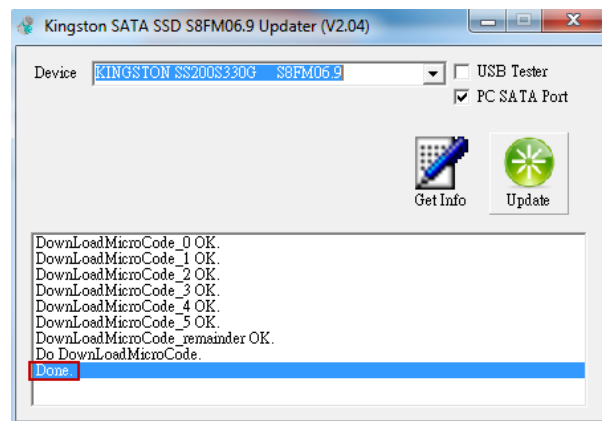
Once you have selected the drive you wish to update, click the green “Update” button. The update process should take less than a minute to complete.



## Step 3: Confirming the update was successful

Once the update is complete, you will see "Done" appear in the lower left corner within the application window.

Click the “Get Info” button to confirm that your SSD is updated to the **S8FM06.9** firmware



## Step 4: Closing the update utility and restarting your system

Click the "X" in the upper right corner to close the update utility. After completing the firmware update process successfully, **Kingston recommends that you safely power down your system, wait 10 seconds and then power on.**

For additional support information, please contact Kingston Technical Support @ <http://www.kingston.com/support>