



SKC100S3, SH100S3 and SVP200S3 Firmware Update Procedure

Intended for:

SKC100S3/120G SKC100S3/240G SKC100S3/480G	SKC100S3/120GBK SKC100S3/240GBK SKC100S3/480GBK	SKC100S3B/120G SKC100S3B/240G SKC100S3B/480G
SH100S3/120G SH100S3/240G SH100S3/480G	SH100S3/120GBK SH100S3/240GBK SH100S3/480GBK	SH100S3B/120G SH100S3B/240G SH100S3B/480G
SVP200S3/60G SVP200S3/90G SVP200S3/120G SVP200S3/240G SVP200S3/480G	SVP200S3/60GBK SVP200S3/90GBK SVP200S3/120GBK SVP200S3/240GBK SVP200S3/480GBK	SVP200S3B/60G SVP200S3B/90G SVP200S3B/120G SVP200S3B/240G SVP200S3B/480G
SVP200S37A/60G SVP200S37A/90G SVP200S37A/120G SVP200S37A/240G SVP200S37A/480G	SVP200S37A/60GBK SVP200S37A/90GBK SVP200S37A/120GBK SVP200S37A/240GBK SVP200S37A/480GBK	SVP200S3B7A/60G SVP200S3B7A/90G SVP200S3B7A/120G SVP200S3B7A/240G SVP200S3B7A/480G
SH103S3/90G SH103S3/120G SH103S3/240G SH103S3/480G	SH103S3/90GBK SH103S3/120GBK SH103S3/240GBK SH103S3/480GBK	SH103S3B/90G SH103S3B/120G SH103S3B/240G SH103S3B/480G

Release Notes for Firmware Rev. 503 (08/22/12)

- Restored a minor TRIM performance variation from a previous Firmware release
- Fixed a power management condition where the device failed to respond to a COMWAKE, which might have resulted in the SSD becoming unresponsive thereby requiring a reset by the host.

Release Notes for Firmware Rev. 502 (06/05/12)

- Improved handling of a COMRESET command during AH CCMDT testing
- Improved responsiveness when resuming from sleep states
- Fixed incidental case that resulted in a flash command time out
- Fixed the handling of internal read buffers when reporting UECC error

System Preparation:

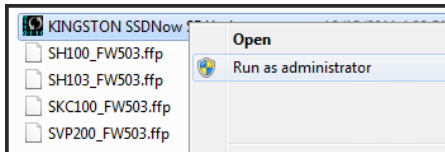
- **As a precaution, perform a backup of all your data to ensure no data is lost during the firmware update process.**
- **You must be running Windows 7, Vista SP2, or XP SP3 in AHCI mode for this to function properly.**
- **Do not unplug power at any time during the firmware update.**
- **AMD users must use the Microsoft AHCI driver for the update procedure to complete successfully.**
- **Use only native SATA ports to perform upgrade. Do NOT use third party controllers.**
- **Notebook users, please charge battery to full charge or use AC power to prevent any power loss during firmware upgrade.**



Step 1: Launching the utility

First, locate your download. Double-click the zip file and extract it to your preferred location. You will see the update utility, the instructions in .pdf form and the firmware file.

If you are using Windows 7 or Vista SP2, right-click the Kingston SSDNow SF Updater and select “Run as administrator” to launch the update utility.



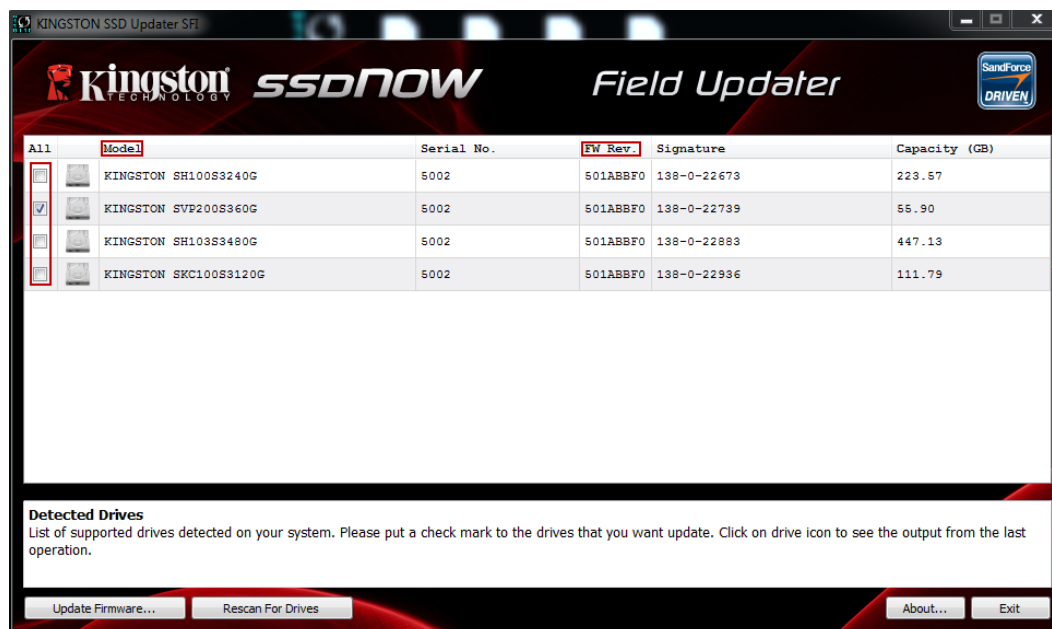
If you are using XP SP3, double-click the Kingston SSDNow SF Updater and proceed.

Step 2: Confirming your model number and firmware revision

Confirm that your drives are present and select the one you wish to update by checking the selection box next to the model number.

- If you are updating the SKC100, you will see SKC100S3xxxG
- If you are updating the SH100, you will see SH100S3xxxG
- If you are updating the SVP200, you will see SVP200S3xxxG
- If you are updating the SH103, you will see SH103S3xxxG

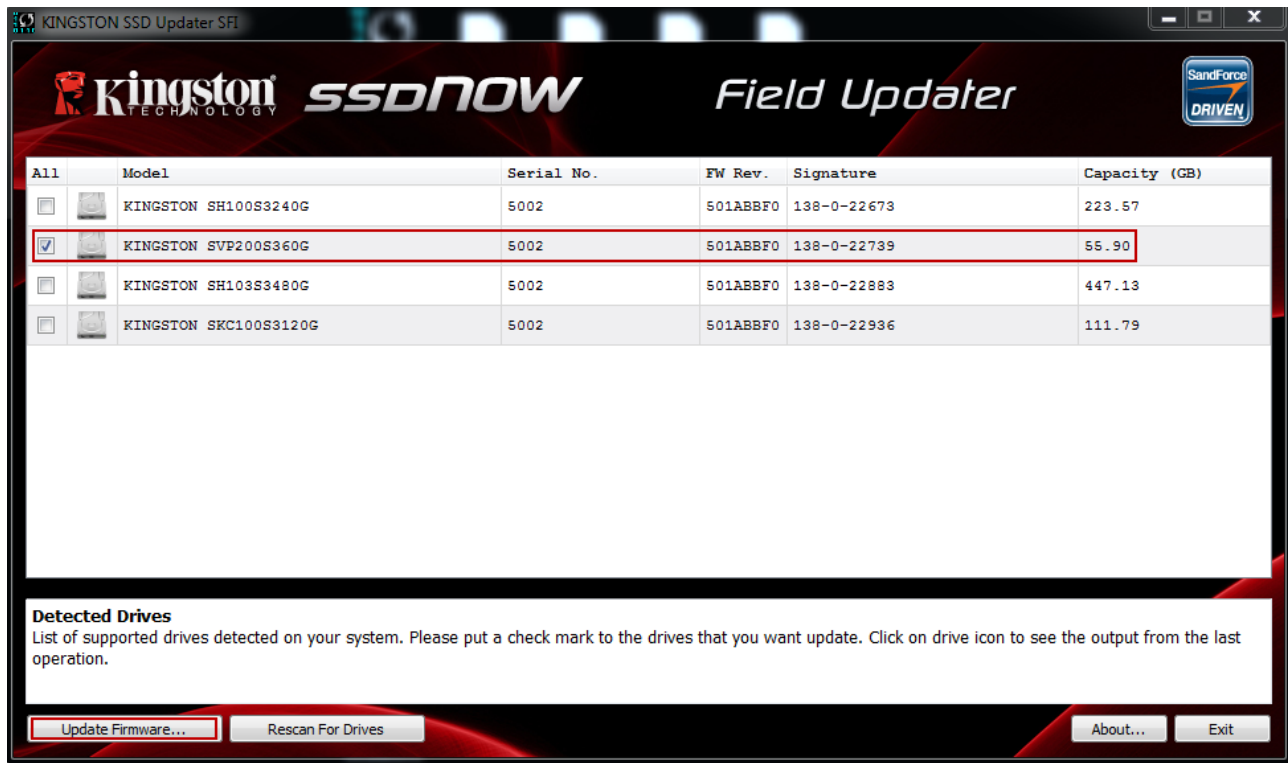
(Note: If you wish to update multiple drives, you must do so one at a time.)





Step 3: Selecting the “Update Firmware” option

Once you’ve confirmed that you need to update your drive’s Firmware and selected the box next to the corresponding Model Name, click on the Update Firmware button located in the lower left corner of the Application interface.

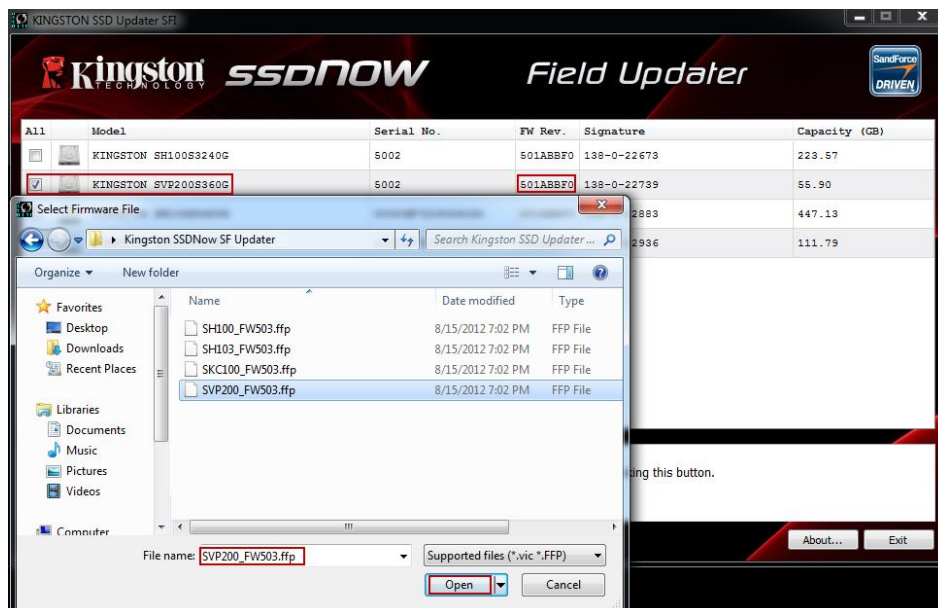




Step 4: Locating the update file

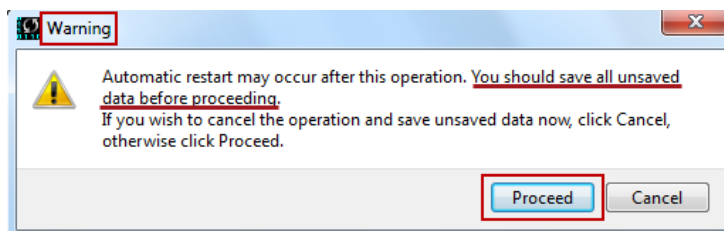
You will be prompted to select the appropriate firmware file you wish to update with. To do this, navigate to where you downloaded the update and select the file that matches the drive you wish to update.

- If you are updating the SKC100, you will see SKC100_FWxxx.ffp
- If you are updating the SH100, you will see SH100_FWxxx.ffp
- If you are updating the SVP200, you will see SVP200_FWxxx.ffp
- If you are updating the SVP200, you will see SH103_FWxxx.ffp



Step 5: Alert messaging and proceeding to update


If you haven't already backed up your data as indicated in the "System Preparation" section of this document, you should cancel the update, back up your data and then proceed back through steps 1-5. If you have successfully backed up your data, select "Proceed" to continue the update process.





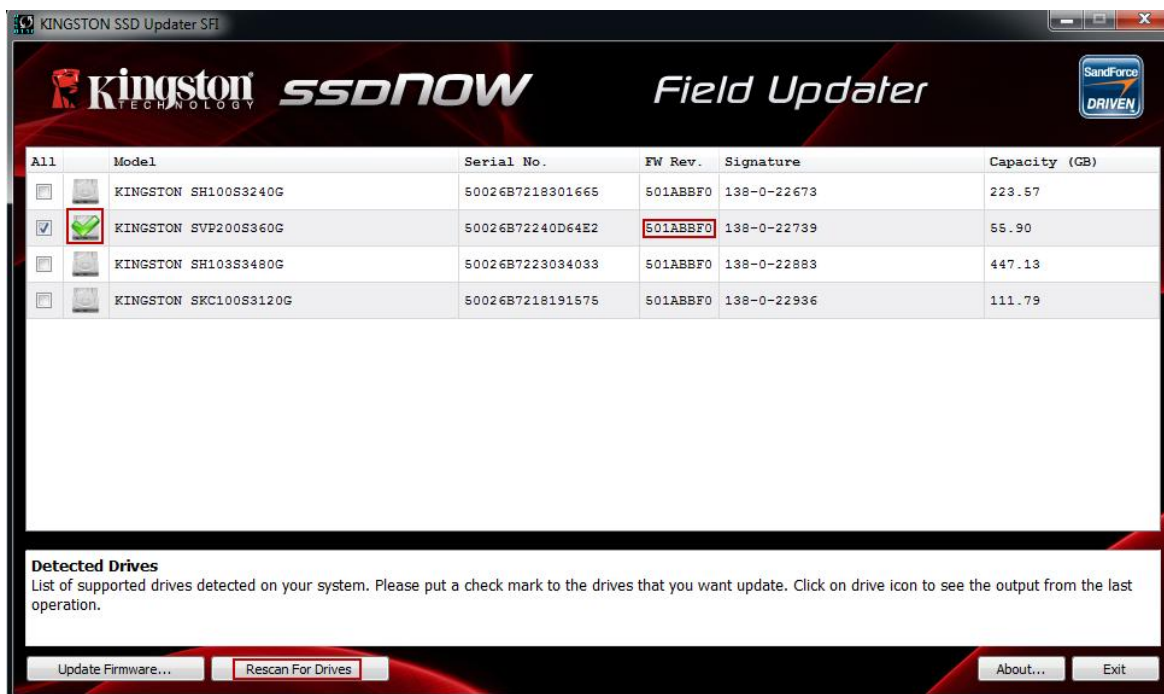
Step 6: Successful update


The update process will take approximately 1 minute to complete. When it has completed successfully, you will receive a green check next to your model. Proceed to step 7 for additional confirmation information.

All	Model	Serial No.	FW Rev.	Signature	Capacity (GB)
<input type="checkbox"/>	KINGSTON SH100S3240G	5002	501ABBF0	138-0-22673	223.57
<input checked="" type="checkbox"/>	 KINGSTON SVP200S360G	5002	501ABBF0	138-0-22739	55.90
<input type="checkbox"/>	KINGSTON SH103S3480G	5002	501ABBF0	138-0-22883	447.13
<input type="checkbox"/>	KINGSTON SKC100S3120G	5002	501ABBF0	138-0-22936	111.79

Step 7: Confirming successful update

As a secondary confirmation, select the “Rescan for Drives” button in the lower left corner of the application. This will enable the utility to refresh your drive so that you can verify that your SSD’s firmware has been updated. Continue to step 8.



All	Model	Serial No.	FW Rev.	Signature	Capacity (GB)
<input type="checkbox"/>	KINGSTON SH100S3240G	50026B7218301665	501ABBF0	138-0-22673	223.57
<input checked="" type="checkbox"/>	 KINGSTON SVP200S360G	50026B72240D64E2	501ABBF0	138-0-22739	55.90
<input type="checkbox"/>	KINGSTON SH103S3480G	50026B7223034033	501ABBF0	138-0-22883	447.13
<input type="checkbox"/>	KINGSTON SKC100S3120G	50026B7218191575	501ABBF0	138-0-22936	111.79

Detected Drives
List of supported drives detected on your system. Please put a check mark to the drives that you want update. Click on drive icon to see the output from the last operation.

Update Firmware... Rescan For Drives About... Exit



Step 8: Confirming successful update (cont.)

Your updated Firmware Revision will be displayed under “FW Rev.” and should read “503xxxxx”.

All	Model	Serial No.	FW Rev.	Signature	Capacity (GB)
<input type="checkbox"/>	KINGSTON SH100S3240G	5002	501ABBF0	138-0-22673	223.57
<input type="checkbox"/>	KINGSTON SVP200S360G	5002	503ABBF0	138-0-22739	55.90
<input type="checkbox"/>	KINGSTON SH103S3480G	5002	501ABBF0	138-0-22883	447.13
<input type="checkbox"/>	KINGSTON SKC100S3120G	5002	501ABBF0	138-0-22936	111.79

Step 9: Repeating the Update Process

If you would like to update additional drives of different capacities, you will need to update them one at a time. To do this, begin again at “Step 1” and repeat this process until you’ve completed your Firmware updates.

Step 10: Closing the update utility

Close the Field Updater by clicking the “X” in the top right corner of the application. Your firmware update is complete.



Step 11: Restarting your system

After completing the Firmware update process, Kingston recommends that you safely power down your system, wait 10 seconds and then power on.