kingston.com/embedded

Automotive-Temp eMMC

The perfect storage solution for extended higher temperature embedded applications

Kingston Automotive-Temp eMMC is designed to meet the needs of embedded applications that requires extended operating temperature range. It offers JEDEC eMMC 5.1 features and is backward compatible to earlier eMMC standards. It has all the advantages of standard eMMC plus the operating temperature range of the device is $-40^{\circ}\text{C}\sim+105^{\circ}\text{C}$, which make it an ideal memory solution for harsh environment, outdoor signage, surveillance, factory automation, transportation, server, touchscreen kiosks and other embedded applications that have extreme environmental conditions.

KEY BENEFITS

- Supports Automotive operating temperature range (-40°C~+105°C).
- Stable, proven & mature die process – One time qualification (no more die revisions)
- Simplifies system design and reduces time to market. The standard interface makes fast-changing NAND technology invisible to the host and the host processor doesn't have to keep changing its software to accommodate every NAND technology change and variation. This helps to significantly reduce the design-in complexity and shorten the qualification cycle.
- Compatibility - All major embedded SOC's (System on a chip) that support eMMC 5.1 standard
- Short lead times – Availability regardless of market conditions
- Kingston brand - Recognized globally for quality, reliability, service and support

MARKET SEGMENTS



Infotainment embedded applications



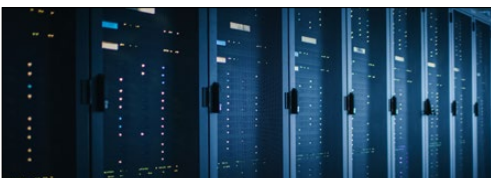
Outdoor applications: signage/kiosks/
solar inverters/chargers



Industrial IoT / Robotics & Factory Automation



High-Definition Video, Conference, and
Surveillance Systems



Data Center Servers

AUTOMOTIVE-TEMP eMMC PART NUMBERS AND SPECIFICATIONS

Part Number	Capacity	eMMC Standard	Package	NAND	Operating Temperature
EMMC04G-AR0A	4GB	5.1 (HS400)	11.5x13x1.0	MLC	-40°C ~ +105°C
EMMC08G-AR0A	8GB	5.1 (HS400)	11.5x13x1.0	MLC	-40°C ~ +105°C

KEY FEATURES

JEDEC Standard Features	eMMC 5.0	eMMC 5.1
Boot Operation	✓	✓
Partitioning	✓	✓
Sleep Mode	✓	✓
Replay Protected Memory Block	✓	✓
Secure Trim/Secure Erase	✓	✓
Hardware Reset	✓	✓
Reliable Write	✓	✓
Background Operation	✓	✓
High Priority Interrupt	✓	✓
DDR Interface	✓	✓
Discard/Sanitize CMD	✓	✓
Packed Commands, Context IDs	✓	✓
Power OFF Notification	✓	✓
Data Tag	✓	✓
Device Health Report	✓	✓
Field FW Update	✓	✓
Production State Awareness	✓	✓
CMD Queuing		✓
Backward Compatibility	✓	✓

Learn more about the different eMMC versions:

eMMC 5.0: <http://www.jedec.org/sites/default/files/docs/JESD84-B50.pdf>

eMMC 5.1: <http://www.jedec.org/sites/default/files/docs/JESD84-B51.pdf>

For more information, including sample and quote requests, please visit kingston.com/emmc.

