



kingston.com/embedded

Automotive-Temp DDR3/3L DRAM

The perfect memory for extended higher temperature embedded applications

Kingston Automotive-Temp discrete DRAM is designed to meet the needs of embedded applications that requires extended operating temperature range. It offers a low-voltage option for lower power consumption. The operating temperature range of the device is $-40^{\circ}\text{C} \sim +105^{\circ}\text{C}$, which make it an ideal memory solution for harsh environment, outdoor signage, surveillance, factory automation, transportation, server, touchscreen kiosks and other embedded applications that have extreme environmental conditions.

MARKET SEGMENTS



Infotainment embedded applications



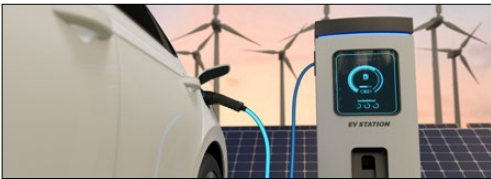
Outdoor applications: signage/kiosks/
solar inverters/chargers



Industrial IoT / Robotics & Factory Automation



High-Definition Video, Conference, and
Surveillance Systems



Charging Stations/Solar Inverters

AUTOMOTIVE-TEMP DDR3/DDR3L PART NUMBERS AND SPECIFICATIONS

Part Number	Capacity	Description	Package	Configuration (Words x Bits)	Speed Mbps	VDD, VDDQ	Operating Temperature
D1216ECMDXGMEY	2Gb	96 ball FBGA DDR3/DDR3L	13.5x7.5x1.2	128Mx16	2133 Mbps	1.35V*	-40°C ~ +105°C
D2516ECMDXGMEY	4Gb	96 ball FBGA DDR3/DDR3L	13.5x7.5x1.2	256Mx16	2133 Mbps	1.35V*	-40°C ~ +105°C

*Backward compatible to 1.5V VDD, VDDQ

KEY FEATURES

- Long term support – Extend your product life
- Short lead times – Availability regardless of market conditions
- Stable, proven & mature die process – One time qualification (no more die revisions)
- Compatibility - All major embedded SOC's (System on a chip) that support DDR3 & DDR3L*
- Kingston brand - Recognized globally for quality, reliability, service and support

* Complies with the JEDEC DDR3/DDR3L industry standard

