

MyTraveler User's Manual

MyTraveler is the DataTraveler® Secure tool that enables you to access and customize your DataTraveler Secure through the MyTraveler Console. Messages and prompts guide you through the MyTraveler installation, use, and customization.

This document includes important frequently asked questions (FAQs). For the latest FAQs, please visit the DataTraveler® website at www.kingston.com/support/faqs/datatraveler.

TABLE OF CONTENTS

1	System	3
1.1	Requirements	3
1.2	Recommendations	3
2	Installation	3
3	Synchronization	5
3.1	Synchronization Preparation	5
3.2	Synchronization Settings	6
3.3	Initial Synchronization	7
3.4	Additional Synchronizations	7
3.5	List of Action Commands	8
4	Customizing the My Traveler Console	9
4.1	Preferences	9
4.2	Settings	10
5	Additional Features	11
5.1	Additional Features (MyTraveler Console)	11
5.2	Additional Features (System Tray Icon)	11
5.3	LCD Display	12
5.4	Console Buttons	13
6	Synchronization Rules	14
7	Troubleshooting	15
8	FAQs	17
	How to Contact Us	18

1 SYSTEM

1.1 Requirements

- Pentium II 266 MHz Processor
- 4MB free disk space (on drive C)
- Operating Systems: Windows Vista™, Windows XP®, and Windows 2000® (SP4)
- USB Port 2.0/1.1

1.2 Recommendations

- Graphic accelerator that supports 24-bit color depth for best-quality graphics.
- 96 DPI video setting.
- Disable Windows ReadyBoost™ in Windows Vista™

* Although your DataTraveler® Secure is enhanced for ReadyBoost, MyTraveler will not operate properly if ReadyBoost cache is enabled on the drive. However, you may enable ReadyBoost cache on a separate drive.

2 INSTALLATION

1. First review the DataTraveler® Secure Installation guide to make sure the drive is installed properly. Also make sure you have the latest MyTraveler/ MyTraveler Guide, which you can download from www.kingston.com/support/downloads.
2. To install MyTraveler, double-click on the drive letter assigned to the DataTraveler® Secure (i.e. E:\) and click **MyTraveler** (Figure 1).

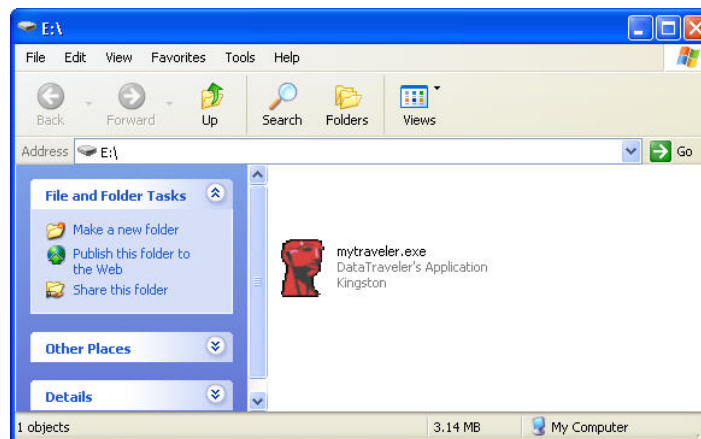


Figure 1: MyTraveler Ready for Installation

Note: If you have an older version of MyTraveler preinstalled on the computer, MyTraveler will prompt you to upgrade to the current version (Figure 2). 1) Click **OK**. 2) Right click on the MyTraveler icon in the system tray next to time/date. 3) Exit the menu options. 4) Perform install of MyTraveler.

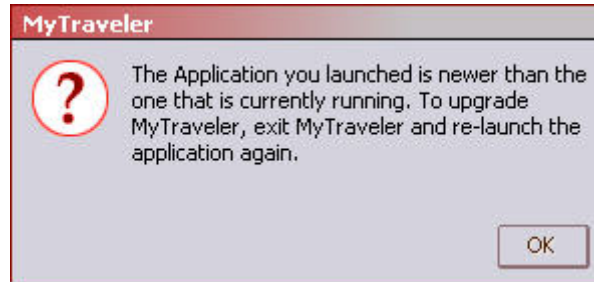


Figure 2: MyTraveler Upgrade

3. The Welcome screen is displayed (Figure 3). Check the box if you want a shortcut for MyTraveler to appear on the Windows desktop. MyTraveler Utility is also created in the Start menu (Start→All Programs→MyTraveler). Click **Finish** to start using MyTraveler or click **Cancel** to abort the installation.



Figure 3: Welcome Screen

4. After a moment, the MyTraveler icon appears in the system tray at the bottom of your screen (Figure 4).



Figure 4: Tray Icon

5. The MyTraveler Console will display at the top right corner of your desktop. If you would like to change the location of the Console, click-and-drag it to a different location.

Note: If MyTraveler Console does not appear on your screen, double-click on the MyTraveler icon (Figure 4) to access the display.

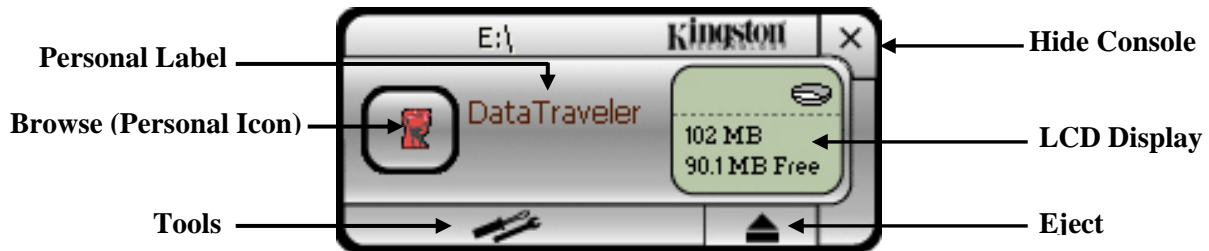


Figure 5: MyTraveler Console

3 SYNCHRONIZATION

3.1 Synchronization Preparation

To synchronize your My Favorites or My Documents folder with the DataTraveler[®] Secure drive, select the **Synchronize My Favorites/ My Documents** option located in the tools menu (Figure 6). If you would like to synchronize a different folder or if you would like to create a new folder for synchronization, select **Synchronize Folder**.



Figure 6: Tools Menu

3.2 Synchronization Settings

1. If you have selected My Favorites or My Documents from the tools list, these settings will automatically be set. However, if you have chosen the Synchronize Folder option, you will need to specify the location of the Host (Computer) folder and the DataTraveler® folder (Figure 7).

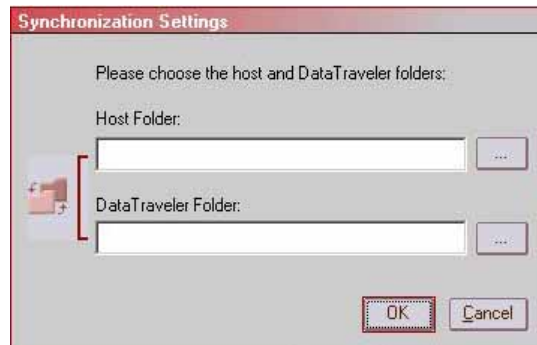


Figure 7: Synchronization Settings Window

2. Click on the Host Folder **Browse** button (Figure 8). Navigate to the data stored on the computer. Highlight the folder and click **OK**.
3. Now click on the DataTraveler® folder **Browse** button (Figure 8). Search for the location where your data is to be stored onto the DataTraveler® Secure. Highlight the selected folder and click **OK**.
4. After these settings are done, click **OK** to complete the Synchronization Settings.

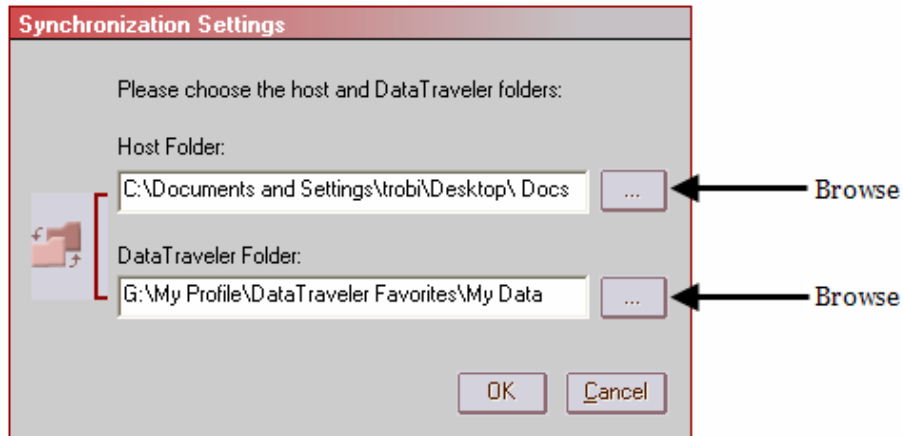


Figure 8: Synchronization Setup

3.3 Initial Synchronization

Now that you have properly configured your folders, you are ready for initial synchronization. Notice all of the highlighted action symbols (Figure 9) pointing towards the DataTraveler®. This shows that the file(s) are to be transferred from the Host to the DataTraveler. Click **Synchronize** to complete the transfer.

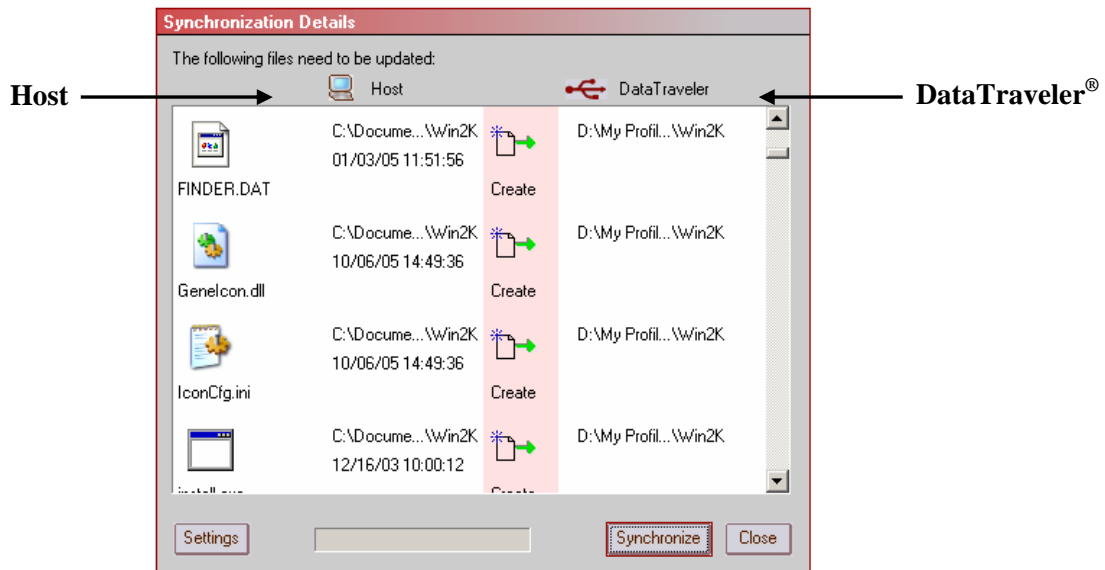


Figure 9: Synchronization Window

3.4 Additional Synchronizations

During additional synchronizations, it is important to review the action symbols prior to finalizing the synchronization. Here in (Figure 10), one file will be deleted from the computer, and another will be skipped during the synchronization. If the action command is incorrect, you

can manually set the action by clicking on the item line and selecting the correct action command.

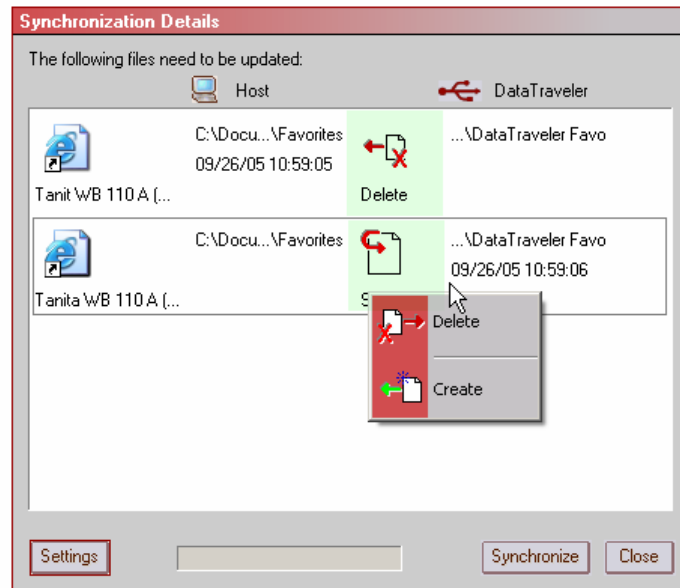


Figure 10: Synchronization Window

3.5 List of Action Commands



Create Transfer the file from the computer to the DataTraveler® Secure.



Create Transfer the file from the DataTraveler Secure to the computer.



Delete Delete the file from the DataTraveler Secure.



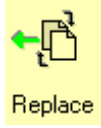
Delete Delete the file from the computer.



Skip Leave the file as is.



Replace Update the file on the DataTraveler Secure with the most current changes.



Update the file on the computer with the most current changes.

4 CUSTOMIZING THE MY TRAVELER CONSOLE

There are two ways to customize the MyTraveler Console.

- a. You can click on the MyTraveler icon located in the system tray (Figure 4), then select **Preferences**. Or,
- b. You can click on the Tools menu on the MyTraveler Console (Figure 6) and select **Settings**.

4.1 Preferences

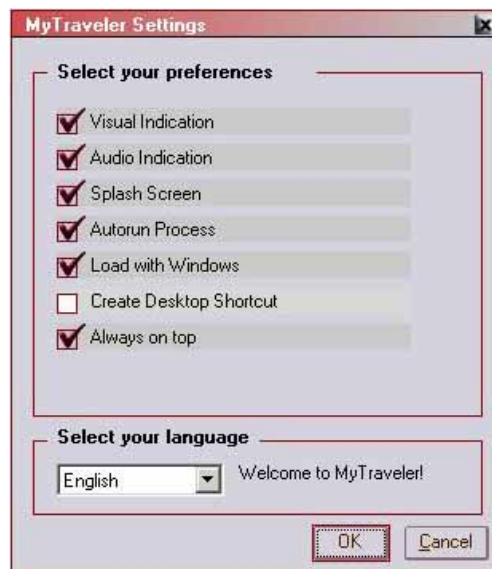


Figure 11: MyTraveler Preferences

Visual Indication

When selected, this will display the Console (Figure 5) every time MyTraveler loads.

Audio Indication

Will generate a sound every time the Console loads. For instruction to customize this sound, please refer to (4.2 Settings).

Splash Screen

When enabled, this displays a MyTraveler moniker on the screen while MyTraveler is loading.

Autorun Process

Automatically loads applications based on autorun instructions.

Load with Windows

If selected, MyTraveler will run in the background every time Microsoft Windows loads.

Create Desktop Shortcut

This creates a MyTraveler icon on the Windows desktop.

Always on Top

By default, the MyTraveler Console will display in front of active and inactive windows. If disabled, active windows will display in front of the MyTraveler Console.

Select your language

Choose from a list, which includes English, French, German, Italian, Japanese, Portuguese, Spanish, Simplified Chinese, and Traditional Chinese. When one of these languages is selected, the **Welcome to MyTraveler!** notification will display in the selected language.

Note: The MyTraveler Settings will only display the languages that your operating system supports.

4.2 Settings

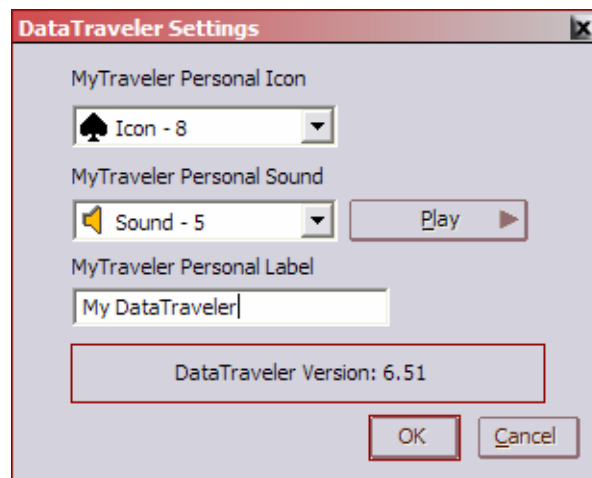


Figure 12: MyTraveler Settings

MyTraveler Personal Icon

Allows you to personalize the icon that appears on the browse button, located on the MyTraveler Console, see (Figure 5).

MyTraveler Personal Sound

Choose from a list of sounds that will emit when the MyTraveler Console loads. Click on the Play button to preview the sound.

MyTraveler Personal Label

Enables you to personalize the MyTraveler label displayed on the front of the MyTraveler Console (Figure 5).

5 ADDITIONAL FEATURES

5.1 Additional Features (MyTraveler Console)

There are additional features accessible through the Tools menu located on the MyTraveler Console (Figure 6).

Login Privacy Zone

Allows you to access a Privacy Zone on your DataTraveler® Secure drive.

Enable/ Disable Write Protection

Allows you to write protect the DataTraveler® Secure drive. If write protect is enabled, you will not be permitted to add, delete, or make changes to any of the data or settings on the DataTraveler® Secure drive.

Note: If you try to modify, create or remove a Privacy Zone while write protect is enabled, a warning will display informing you that the device is write protected. If you choose “yes” to proceed, write protect will be disabled allowing you to perform the task.

5.2 Additional Features (System Tray Icon)

There are additional features available through the MyTraveler icon located in the System Tray. Click on the MyTraveler icon (Figure 4) to access these features.

Hide

This option will close the MyTraveler Console. Nevertheless the program will continue to run in the System Tray.

Show

Redisplay the MyTraveler Console on the desktop.

Help

If your computer has Internet access, this feature will direct you to the Kingston Technical Support home page.

About

Display general information for the MyTraveler application.

Visit our web site

If your computer has Internet access, this feature will direct you to Kingston's main home page.

Check for newer version

If your computer has Internet access, this feature will direct you to Kingston Technical Support's download page.

Exit

Terminate the MyTraveler application.

5.3 LCD Display

- The LCD display shows your DataTraveler[®] Secure total capacity and free space. The free space indicator turns red when 5% or less of your total disk space is free.
- The Privacy Zone icon appears in the LCD display when you are logged in to your Privacy Zone using MyDataZone (Figure 13).
- The write protection icon appears in the LCD display if your DataTraveler Secure is write-protected (Figure 14).

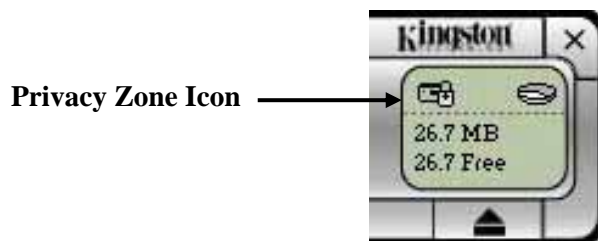


Figure 13: Privacy Zone Indication

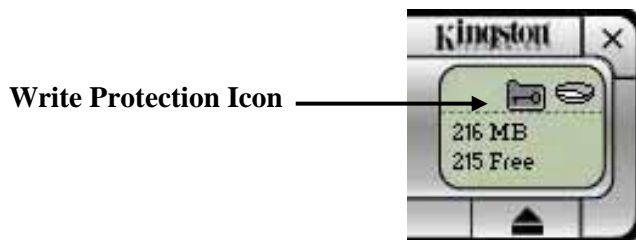


Figure 14: Write Protection Indication

5.4 Console Buttons

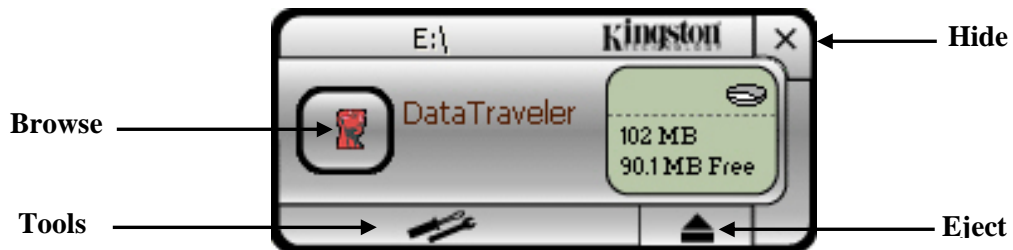


Figure 15: Console Buttons

Tools

Click **Tools** to open the MyTraveler Console menu. This menu provides access to advanced features and settings.

Browse

Click the **Browse** button to display the content of the DataTraveler[®] Secure drive.

Hide

Click **X** in the upper right corner to close the MyTraveler Console. When the Console is closed, a message will display advising that the program will continue to run in the taskbar (Figure 16). Click the checkbox in the bottom left corner if you do not want this message to display in the future.



Figure 16: Close MyTraveler Console

To redisplay the MyTraveler Console, double-click on the MyTraveler icon located in the System Tray (Figure 4).

Eject

To ensure data integrity, use the **Eject** button prior to removing the drive from the USB port. Click **Eject**, wait for the safe removal message, and then remove your DataTraveler® Secure. You can also use the Unplug or Eject Hardware utility to safely remove the Drive. This utility is located in the System Tray next to the time/ date.

Caution! Removing your DataTraveler® Secure drive prior to ejecting or stopping it can result in loss of data!

6 SYNCHRONIZATION RULES

The following rules apply to the synchronization process.

- **New file:** If a new file is created in any folder, MyTraveler enables you to create the same file in the other folder/s.
- **Deleted file:** If a file was deleted in any folder, MyTraveler enables you to delete the file in the other folder/s.
- **Modified file:** If a file was modified in any folder, MyTraveler enables you to replace the file in the other folder/s. If the file was modified in all folders, MyTraveler enables you to skip this file without performing any operation.
- **Renamed file:** Renaming a file is equivalent to deleting it and creating a new one. Therefore, the rules for “Deleted file” apply.

7 TROUBLESHOOTING

MyTraveler displays a number of messages with guidelines for troubleshooting. Below is a list of examples:

- **Fatal error**
A general error message indicates that a fatal error has occurred from which the application cannot recover.
- **Windows version not supported**
This message is displayed if you attempt to run MyTraveler on an unsupported version of Windows. (See Section 1.1 for system requirements.)
- **Large fonts**
MyTraveler is designed to use small fonts, and may not provide optimal viewing with large fonts. To avoid errors or display problems, change the font size to 96 DPI. Open your Control Panel and follow the path of your operating system:
 - Windows Vista™: Appearance and Personalization→Personalization→Adjust font size (DPI)
 - Windows XP®: Display Properties→Settings→Advanced→DPI Setting
 - Windows 2000®: Display Properties→Settings→Advanced→Font Size
- **Unable to Eject DataTraveler® Secure**
The message “The DataTraveler is currently in use by another application.” usually indicates that you have not closed all applications and/or files on your DataTraveler Secure before trying to remove it. To resolve this, close all applications and/or file(s) and then remove the drive.

Note: In Windows Vista™, make sure ReadyBoost™ cache is not enabled on the DataTraveler Secure drive. If you continue having problems removing the drive, use Safely Remove Hardware located in the system tray next to the time/ date.

- **Device cannot be stopped** (Windows 2000® only)

If you click **Stop** in the **Unplug or Eject Hardware** dialog box and the message appears “The device ‘xxx’ cannot be stopped right now,” it usually indicates that you have not closed all applications and/or files on your DataTraveler® Secure before trying to remove it. To resolve this, close the MyTraveler application and try again after a few seconds. If the message appears again, close all applications and/or file(s) prior to removing your DataTraveler® Secure.

8 FAQs

A few of the most frequently asked questions are listed below. For a complete list of the latest FAQs, go to the DataTraveler® Secure website (www.kingston.com/support/faqs/datatraveler).

- Q:** Every time I insert a DataTraveler® Secure drive into a Windows Vista™ computer, an AutoPlay dialog appears with an option to “Speed up my system using Windows ReadyBoost™.” What is this feature?
- A:** ReadyBoost is a Windows Vista feature which has the ability to utilize USB flash drive storage space to improve system performance. Although DataTraveler® Secure is enhanced for ReadyBoost, MyTraveler software does not support it. Make sure ReadyBoost cache is not enabled on the DataTraveler Secure if you intend to use MyTraveler.
- Q:** How do I check the MyTraveler version number?
- A:** Click the MyTraveler tray icon, and select **About** from the menu list.
- Q:** Can I use MyTraveler with more than one DataTraveler® Secure on my computer?
- A:** Yes. MyTraveler will access more than one drive at a time.
- Q:** Why can't I copy files to my DataTraveler® Secure?
- A:** Your DataTraveler® Secure may be write-protected or you may not have enough free disk space. If your DataTraveler® Secure is write-protected, you will see the Write Protection logo on the LCD display of your DataTraveler® Secure console. In order to disable the write-protection, click on the Tools button from the My Traveler Console, and select **Disable Write Protection**.
- Q:** How can I view the MyTraveler Console after I close it?
- A:** Click on the MyTraveler tray icon and select **Show** from the pop-up menu.

HOW TO CONTACT US

North America

Kingston Technology
17600 Newhope St.
Fountain Valley, CA 92708
U.S.A.

Technical Support:

(714) 435-2639
(800) 435-0640 (U.S. & Canada only)

Email:

tech_support@kingston.com

World Wide Web:

<http://www.kingston.com>

Europe

Kingston Technology Europe
Kingston Court, Brooklands Close
Sunbury-On-Thames, Middlesex
TW16 7EP, England

Technical Support:

Phone: 00800 88880101 (toll-free for most Western
European countries)
Austria: 0800 295569
Italy: 800 790 094
ValueRAM: +44 (0) 1932 755 210
General: +44 (0) 1932 738 888

Email:

eu_infoservice@kingston-technology.com

World Wide Web:

<http://www.kingston.com/europe>

© 2007 Kingston Technology Company Ltd. All rights reserved.

This document is for information use only and is subject to change without prior notice. Kingston Technology Company Ltd. assumes no responsibility for any errors that may appear in this document. No part of this document may be reproduced, transmitted, transcribed, stored in a retrievable manner or translated into any language or computer language, in any form or by any means, electronic, mechanical, magnetic, optical, chemical, manual or otherwise, without prior written consent of Kingston Technology Company Ltd.

Kingston products are not warranted to operate without failure. Accordingly, in any use of the Product in life support systems or other applications where failure could cause injury or loss of life, the Product should only be incorporated in systems designed with appropriate and sufficient redundancy or backup features.

Contact your local Kingston sales office or distributor, or visit our website at www.kingston.com to obtain the latest specifications before placing your order.