



SKC100S3, SH100S3 and SVP200S3 Firmware Update Procedure (Linux)

Intended for:

SKC100S3/120G, SKC100S3/120GBK, SKC100S3B/120G
SKC100S3/240G, SKC100S3/240GBK, SKC100S3B/240G
SKC100S3/480G, SKC100S3/480GBK, SKC100S3B/480G

SH100S3/120G, SH100S3B/120G, SH100S3/120GBK
SH100S3/240G, SH100S3B/240G, SH100S3/240GBK
SH100S3/480G, SH100S3B/480G, SH100S3/480GBK

SVP200S3/60G, SVP200S3B/60G, SVP200S3/60GBK
SVP200S3/90G, SVP200S3B/90G, SVP200S3/90GBK
SVP200S3/120G, SVP200S3B/120G, SVP200S3/120GBK
SVP200S3/240G, SVP200S3B/240G, SVP200S3/240GBK
SVP200S3/480G, SVP200S3B/480G, SVP200S3/480GBK

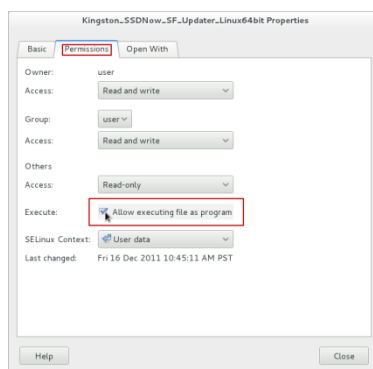
System Preparation:

- As a precaution, perform a backup of all your data to ensure no data is lost during the firmware update process.
- You must be running Linux in AHCI mode for this to function properly.
- Use only native SATA ports to perform upgrade. Do NOT use third party controllers.
- Do not unplug power at any time during the firmware update.
- Notebook users, please charge battery to full charge or use AC power to prevent any power loss during firmware upgrade.

Step 1: Locating the file and selecting file permissions

Locate your download, right-click the file, select “Properties” and click on the “Permissions” tab. Make sure that “Allow executing file as program” is selected.

*Note: If you’re using a different GUI (Graphical User Interface) with Linux, you can also ensure the file permissions allow executing via terminal by typing `>sudo chmod +x{name of the update utility}`



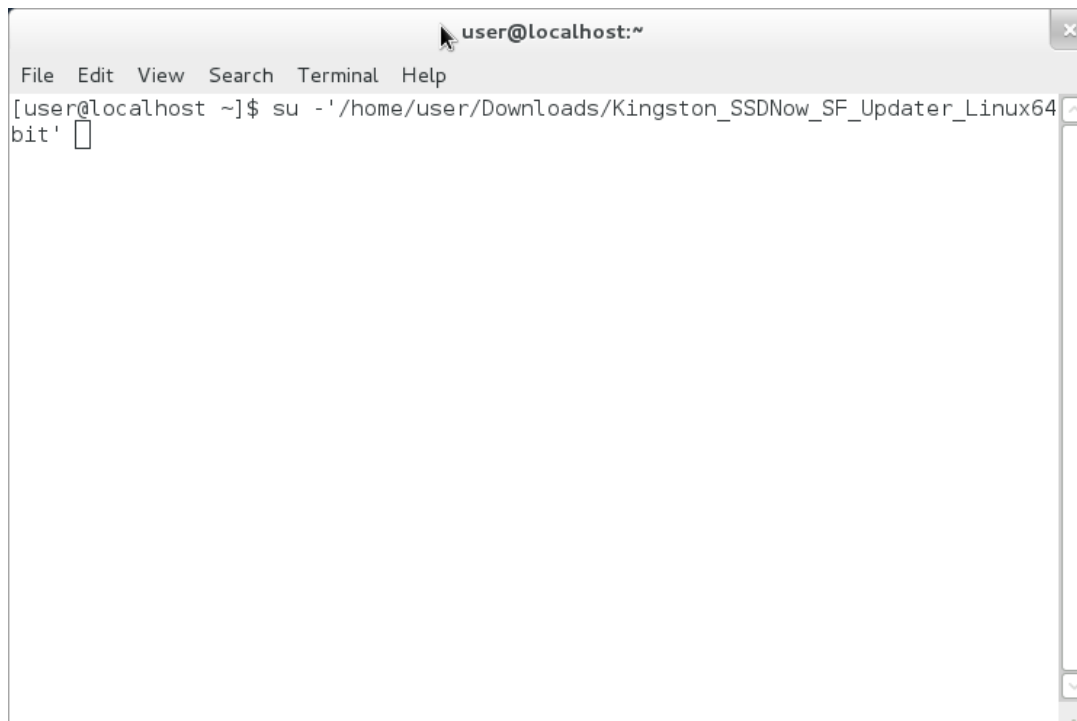


Step 2: Launching the Updater

Open a terminal window, type “sudo” or “su -” , press the spacebar once and then drag the updater executable from your download location into your terminal window. The path of the update utility will auto-populate in the terminal window (as seen in the image below.)

To launch the updater, you must reselect the terminal window by clicking on it before pressing “Enter” (This will ensure that you have selected the active window). Once you do this, you will be prompted for your password to run the executable.

Enter your password and proceed to the next step.

A screenshot of a Linux terminal window. The title bar reads "user@localhost:~". The menu bar includes "File", "Edit", "View", "Search", "Terminal", and "Help". The terminal content shows the command: [user@localhost ~]\$ su -'/home/user/Downloads/Kingston_SSDNow_SF_Updater_Linux64bit' followed by a cursor. The window has a scrollbar on the right side.

```
user@localhost:~
File Edit View Search Terminal Help
[user@localhost ~]$ su -'/home/user/Downloads/Kingston_SSDNow_SF_Updater_Linux64bit'
█
```

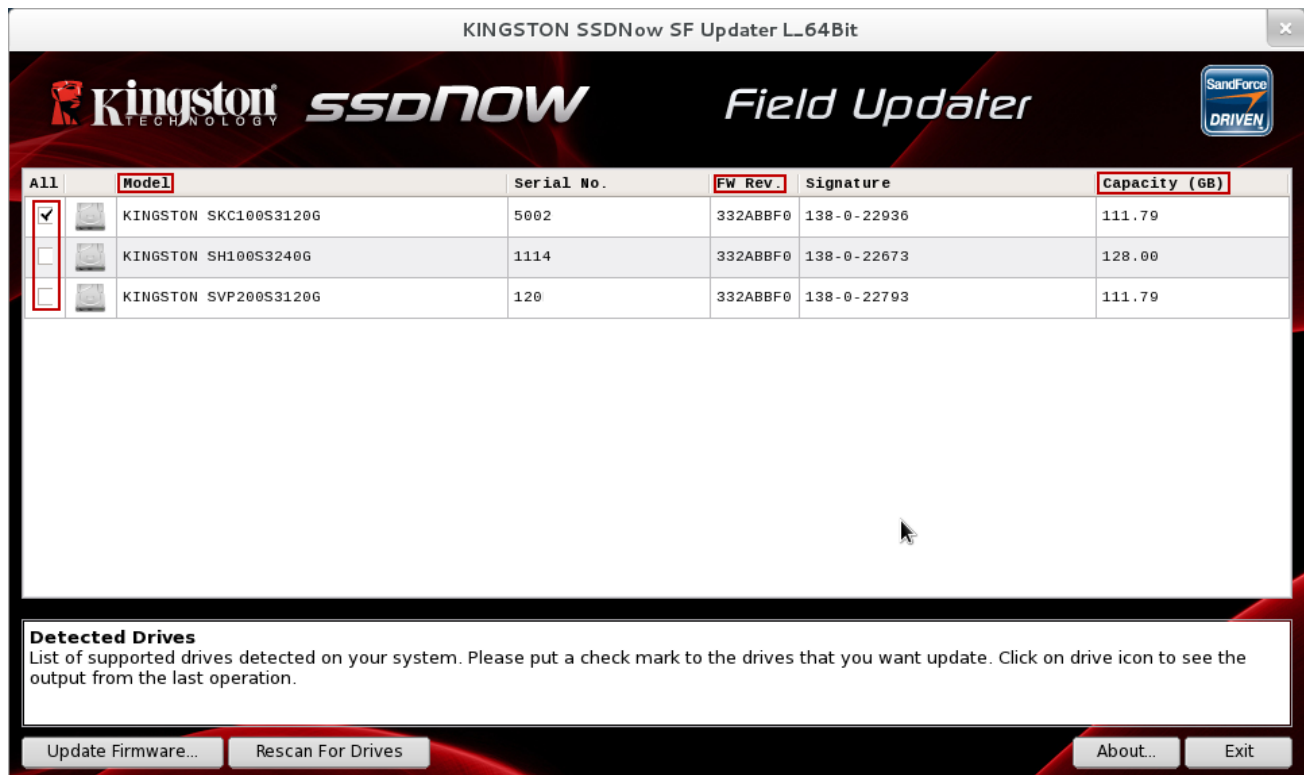


Step 3: Confirming your model number and firmware revision

Confirm that your model drive is present and select the one you wish to update by checking the selection box next to the model number.

- If you are updating the SKC100, you will see SKC100S3xxxG
- If you are updating the SH100, you will see SH100S3xxxG
- If you are updating the SVP200, you will see SVP200S3xxG

(Note: If you wish to update multiple drives, you must do so one at a time.)



All	Model	Serial No.	FW Rev.	Signature	Capacity (GB)
<input checked="" type="checkbox"/>	KINGSTON SKC100S3120G	5002	332ABBF0	138-0-22936	111.79
<input type="checkbox"/>	KINGSTON SH100S3240G	1114	332ABBF0	138-0-22673	128.00
<input type="checkbox"/>	KINGSTON SVP200S3120G	120	332ABBF0	138-0-22793	111.79

Detected Drives
List of supported drives detected on your system. Please put a check mark to the drives that you want update. Click on drive icon to see the output from the last operation.

Update Firmware... Rescan For Drives About... Exit



Step 4: Selecting the “Update Firmware” option

Once you’ve confirmed that you need to update your drive’s Firmware and selected the box next to the corresponding Model Name, click on the Update Firmware button located in the lower left corner of the Application interface.



All	Model	Serial No.	FW Rev.	Signature	Capacity (GB)
<input checked="" type="checkbox"/>	KINGSTON SKC100S3120G	5002	332ABBF0	138-0-22936	111.79
<input type="checkbox"/>	KINGSTON SH100S3240G	1114	332ABBF0	138-0-22673	128.00
<input type="checkbox"/>	KINGSTON SVP200S3120G	120	332ABBF0	138-0-22793	111.79

Detected Drives
List of supported drives detected on your system. Please put a check mark to the drives that you want update. Click on drive icon to see the output from the last operation.

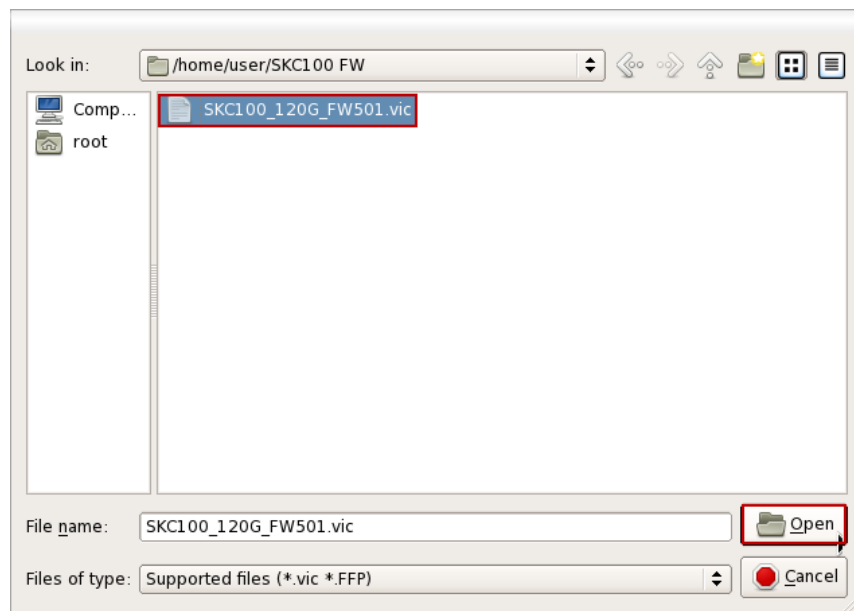
Update Firmware... Rescan For Drives About... Exit



Step 5: Locating the update file

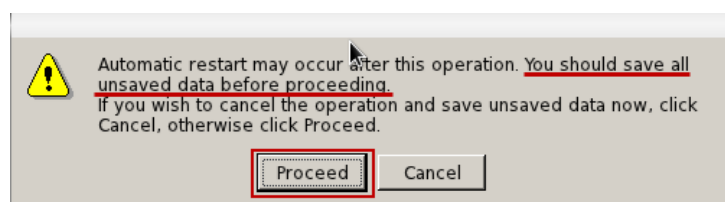
You will be prompted to select the appropriate firmware file you wish to update with. To do this, navigate to where you downloaded the update and select the file that matches the capacity of the drive you wish to update. (Ex. SKC100S3/120G firmware shown)

- If you are updating the SKC100, you will see SKC100_xxxG_FWxxx.vic
- If you are updating the SH100, you will see SH100_xxxG_FWxxx.vic
- If you are updating the SVP200, you will see SVP200_xxxG_FWxxx.vic



Step 6: Alert messaging and proceeding to update




If you haven't already backed up your data as indicated in the "System Preparation" section of this document, you should cancel the update, back up your data and then proceed back through steps 1-5. If you have successfully backed up your data, select "Proceed" to continue the update process.





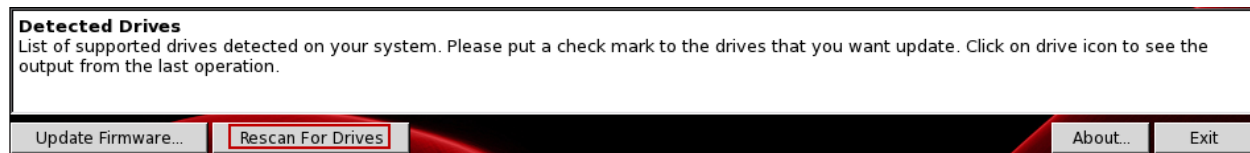
Step 7: Successful update

The update process will take approximately 1 minute to complete. When it has completed successfully, you will receive a green check next to your Model “**Kingston SKC100S3xxxx**”. Proceed to step 8 for additional confirmation information.

All	Model	Serial No.	FW Rev.	Signature	Capacity (GB)
<input checked="" type="checkbox"/>	 KINGSTON SKC100S3120G	5002	332ABBF0	138-0-22936	111.79
<input type="checkbox"/>	 KINGSTON SH100S3240G	1114	332ABBF0	138-0-22673	128.00
<input type="checkbox"/>	 KINGSTON SVP200S3120G	120	332ABBF0	138-0-22793	111.79

Step 8: Confirming successful update

As a secondary confirmation, select the “Rescan for Drives” button in the lower left corner of the application. This will enable the utility to refresh your drive so that you can verify that your SSD’s firmware has been updated. Continue to step 8.



Step 9: Confirming successful update (cont.)

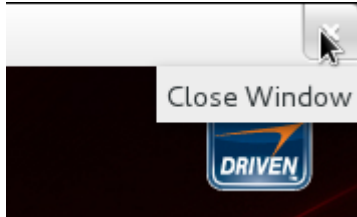
Your updated Firmware Revision will be displayed under “**FW Rev.**” and should read “**501xxxxx**”.

All	Model	Serial No.	FW Rev.	Signature	Capacity (GB)
<input type="checkbox"/>	 KINGSTON SKC100S3120G	5002	501ABBF0	138-0-22936	111.79



Step 10: Closing the update utility

Close the Field Updater by clicking the “X” in the top right corner of the application. Your firmware update is complete.



Step 11: Restarting your system

After completing the Firmware update process, Kingston recommends that you safely shutdown your system, wait 10 seconds and then power on.